

North Syracuse Central School District Reopening Information



OUR PATH FORWARD: A COMMUNITY OVERCOMING COVID



THANK YOU TO OUR PARTNERS!



ongovhealth
Onondaga County
Health Department
ongov.net/health • facebook.com/ongovhealth



New York State
EDUCATION DEPARTMENT
Knowledge > Skill > Opportunity

The North Syracuse Central School District has developed this plan to support the safe reopening of schools with a focus on care first. This document was created to ensure the physical, emotional and psychological safety of students and staff so that teaching and learning can happen. The plan outlines procedures before students and employees return to school buildings, along with guidance that is applicable throughout the 2020-2021 school year.

Many thanks to state and local agencies and our NSCSD staff for providing guidance throughout the planning process.



North Syracuse Central School District Reopening Guidance

OUR PATH FORWARD: A COMMUNITY OVERCOMING COVID

TABLE OF CONTENTS

DISTRICT INFORMATION

| | |
|---------------------------|---|
| Contact Information | 3 |
|---------------------------|---|

INTRODUCTION

| | |
|---|---|
| Reopening Plan/Superintendent's Message | 4 |
|---|---|

COMMUNICATION

| | |
|--|---|
| Communication Tools | 5 |
| Family & Community Engagement | 6 |
| Contacting the District | 7 |
| District-Level Communication Systems | 8 |

HEALTH & SAFETY

| | |
|---|-------|
| Daily Health & Temperature Screenings | 10 |
| Hand Hygiene Plan | 11 |
| Respiratory Hygiene Plan/Signs of Illness/Health Office Info. ... | 12 |
| Social Distancing | 13 |
| Building Visitors | 14 |
| Face Coverings | 15 |
| Medically Vulnerable/High Risk | 16 |
| Management of Ill Students/Staff at School | 17 |
| Confirmed Case of COVID-19 in Schools | 18 |
| Return to School after Illness | 19 |
| Contact Tracing/Early Warning Signs | 20 |
| Cleaning and Disinfecting | 21-22 |
| School Health Office Cleaning/Nebulizer Treatments | 23 |

FACILITIES

CHILD NUTRITION

| | |
|--|----|
| Food Service/Student Allergies | 25 |
| Meal Program Options/Cleaning Procedures | 26 |

TRANSPORTATION

| | |
|--|----|
| Transportation Safety/Hand Sanitizer | 27 |
|--|----|

SOCIAL EMOTIONAL WELL-BEING

TECHNOLOGY & CONNECTIVITY

TEACHING & LEARNING

SPECIAL EDUCATION - REQUIRED NOTICES

TEACHER AND PRINCIPAL EVALUATION SYSTEMS

ATTENDANCE & CHRONIC ABSENTEEISM

BILINGUAL EDUCATION & WORLD LANGUAGES - REQUIRED NOTICES

EARLY LEARNING/BEFORE & AFTER SCHOOL PROGRAMS ...

SCHOOL SCHEDULES

| | |
|--------------------------------|----|
| Elementary Level | 37 |
| Middle School Level | 38 |
| Junior High School Level | 39 |
| High School Level | 40 |

SPECIAL AREA INSTRUCTION

CAREER & TECHNICAL EDUCATION

ATHLETICS/EXTRACURRICULARS

CERTIFICATION & SUBSTITUTE TEACHING - REQUIRED NOTICES

ACKNOWLEDGMENTS



North Syracuse Central School District Reopening Guidance

OUR PATH FORWARD: A COMMUNITY OVERCOMING COVID

CONTACT INFORMATION

OUR SCHOOLS



Cicero-N. Syracuse High
6002 Route 31
Cicero, NY 13090
(315) 218-4100
[Jamie Sullivan](#)



N. Syracuse Junior High
5353 W. Taft Road
North Syracuse, NY 13212
(315) 218-3600
[Constance Turose](#), Principal



Roxboro Rd. Middle
300 Bernard Street
Mattydale, NY 13211
(315) 218-3300
[Ashley Carducci](#), Interim Principal



Allen Rd. Elementary
803 Allen Road
North Syracuse, NY 13212
(315) 218-2300
[Emily Lafountain](#), Principal



KWS Bear Rd. Elementary
590 Bear Road
North Syracuse, NY 13212
(315) 218-2400
[John Cole](#), Principal



Cicero Elementary
5979 Route 31
Cicero, NY 13090
(315) 218-2500
[Kathleen Wheeler](#), Principal



Gillette Rd. Middle
6150 S. Bay Road
Cicero, NY 13090
(315) 218-4100
[David Cordone](#), Principal



Lakeshore Rd. Elementary
7180 Lakeshore Road
Cicero, NY 13090
(315) 218-2600
[Tina Chmielewski](#), Principal



N. Syracuse Early Education
205 S. Main Street
North Syracuse, NY 13212
(315) 218-2200
[Dawn Hussein](#), Principal



Roxboro Rd. Elementary
200 Bernard Street
Mattydale, NY 13211
(315) 218-2700
[Matthew Motala](#), Principal



Smith Rd. Elementary
5959 Smith Road
North Syracuse, NY 13212
(315) 218-2800
[Lyndsey Maloney](#), Principal



DISTRICT ADMINISTRATION

Information.....(315) 218-2100
[Daniel D. Bowles](#),
Superintendent of Schools(315) 218-2150
[Christopher R. Leahey, Ed.D.](#),
Associate Superintendent for Teaching & Learning.....(315) 218-2148
[Donald F.X. Keegan](#),
Associate Superintendent for Business Services.....(315) 218-2143
[Jason Nephew](#),
Assistant Superintendent for Human Resources.....(315) 218-2125

BOARD OF EDUCATION

Paul Farfaglia, President
Michael A. Mirizio, Vice President
Robert Crabtree
George Harrington
Matthew Hermann
Terri Krueger
Erin McDonald
Mary Scanlon
Mark Thorne
[Connie Gibson](#), District Clerk.....(315) 218-2131



“Never doubt that a small group of thoughtful, committed citizens can change the world; indeed, it’s the only thing that ever has.”

- Margaret Mead

REOPENING PLAN

SUPERINTENDENT’S MESSAGE

Without a doubt, the obstacles presented by the COVID-19 Pandemic have created tremendous challenges for our entire world. In creating a plan to address the safe reopening of schools, the North Syracuse Central School District has relied on industry-specific guidelines provided by the New York State Department of Health – available on the [New York Forward website](#) as well as guidance provided by the New York State Education Department, in the document, [RECOVERING, REBUILDING, AND RENEWING: THE SPIRIT OF NEW YORK’S SCHOOLS REOPENING GUIDANCE](#).

This plan is comprised of the collaborative work of more than 100 District stakeholders coming together through the NSCSD Re-Entry Committee and its five subgroups: Instructional Operations, Proactive Infection, Social and Emotional Wellness, Workplace Safety and Communications. It includes the voice of the greater North Syracuse CSD community as input was sought in the form of a community survey administered from July 17 - 24. The survey received tremendous support with more than 6,000 responses. We are grateful to all of our community members who took the time to help us shape this plan. Their input has been invaluable.

While always prioritizing the health and safety of students and staff, this plan is also designed to be modified as necessary. Flexibility is a key part of all planning and changes will be clearly communicated using various NSCSD [communication systems](#) and on www.nscsd.org/updates.

The Re-Entry Committee will continue to provide guidance and recommendations navigating the academic, social, and emotional effects of the COVID-19 pandemic on students and employees. As always, thank you for your support as we continue to work together to meet the needs of our students.

Sincerely,

Daniel D. Bowles, Superintendent of Schools



The North Syracuse Central School District Re-Entry Plan includes all assurances completed by Superintendent of Schools Daniel D. Bowles and all of the elements outlined in the New York State Department of Education guidance document.








North Syracuse Central School District Reopening Guidance

OUR PATH FORWARD: A COMMUNITY OVERCOMING COVID

COMMUNICATION

COMMUNICATION/FAMILY & COMMUNITY ENGAGEMENT

The North Syracuse Central School District has a comprehensive communications strategy in place to ensure the rapid dissemination of information to students, parents/legal guardians, staff and visitors. The District will provide up-to-date information on COVID-19 and its impact. The District is committed to using all available methods of communication to share information with students, staff, families and community members in the most efficient and effective manner. The District will provide information such as instructions, training and other notifications related to the COVID-19 pandemic. Appropriate signs will be posted in all schools, district buildings, classrooms, buses and common areas as required. Please click the methods of communication listed below to learn more.

| TYPICAL METHODS OF OUTGOING COMMUNICATION USED AT THE DISTRICT LEVEL | | | | |
|--|---|---|--|---|
| Students  | Staff  | Parents/Guardians  | Visitors  | Community  |
| <ul style="list-style-type: none"> District website SchoolTool School Email Social media | <ul style="list-style-type: none"> District website SchoolMessenger alerts NSCSD Staff Email Staff website Staff newsletters Social media | <ul style="list-style-type: none"> District website SchoolTool SchoolMessenger alerts Peachjar Social media District newsletter | <ul style="list-style-type: none"> District website Social media Building signs | <ul style="list-style-type: none"> District website Social media Building signs District newsletter |

COMMUNICATIONS OFFICE.....(315) 218-2190

The District employs a full-time School Information Officer (SIO) as a point of contact/representative of the NSCSD Superintendent of Schools and Board of Education. The Communications Officer/SIO is responsible for the dissemination of all public information and is the point of contact for local media. Emergency closures and urgent messages are regularly communicated with local media outlets.

[Laurie Cook](#) is the District's SIO and can be reached at (315) 218-2190.



North Syracuse Central School District Reopening Guidance

OUR PATH FORWARD: A COMMUNITY OVERCOMING COVID

COMMUNICATION (CONTINUED)

COMMUNICATION/FAMILY & COMMUNITY ENGAGEMENT (CONTINUED)

The North Syracuse Central School District encourages students, staff, and visitors to adhere to CDC and DOH guidance regarding the appropriate use of personal protective equipment (PPE), including face coverings, as discussed in more detail in the [“Health and Safety” portion](#) of this plan. The NSCSD will communicate these requirements through verbal and written instruction.

The District will ensure all students are trained on how to follow COVID-19 protocols safely and correctly. This will include training on proper hand hygiene, social distancing, respiratory hygiene, and use of face coverings. The District will use available [communication methods](#) to routinely disseminate information to students, staff and families reminding them of appropriate health and safety procedures in accordance with CDC and DOH guidelines. Additionally, posters on these subjects will be made available for download and print by teachers, staff and families.

The District will also provide copies of this document in the language(s) spoken at home among families and throughout the school community, including:

- Arabic
- Bosnian
- Burmese
- Chin (Malaysia-Burmese)
- Chinese
- Nepali
- Pashtu (Afghanistan)
- Persian
- Spanish

Written plans will also be accessible to those with visual and/or hearing impairments. Interested parties will be instructed on accessing these documents as they become available.

Additional information about [Bilingual Education and World Languages](#) can be found in this document.

Acronym Legend

Several acronyms are used throughout this document. A listing of frequently used acronyms is provided below:

| | |
|----------|--|
| ADA | Americans with Disabilities Act |
| AIS | Academic Intervention Services |
| APPR | Annual Professional Performance Review |
| ATP | Adenosin Triphosphate |
| BCNYS | Building Code of New York State |
| BCS | Building Condition Survey |
| CDC | Centers for Disease Control and Prevention |
| CPSE | Committees on Preschool Special Education |
| CSE | Committees on Special Education |
| CTE | Career & Technical Education |
| DOH | New York State Department of Health |
| ELL | English Language Learners |
| ENL | English as a New Language |
| EPA | US Environmental Protection Agency |
| FAPE | Free and Appropriate Public Education |
| HEPA | High Efficiency Particulate Air |
| HVAC | Heating, Ventilation, and Air Conditioning |
| IEP | Individualized Education Programs |
| MERV | Minimum Efficiency Reporting Values |
| MIS-C | Multisystem Inflammatory Syndrome in Children |
| NSCSD | North Syracuse Central School District |
| NSLP | National School Lunch Program |
| NYSITELL | New York State Identification Test for English Language Learners |
| NYSPHSAA | New York State Public High School Athletic Association |
| OFP | Office of Facilities Planning |
| OSHA | Occupational Safety and Health Administration |
| OT | Occupational Therapy |
| PPE | Personal Protective Equipment |
| PT | Physical Therapy |
| SBP | New York State School Breakfast Program |
| SFA | School Food Authority |
| SIO | School Information Officer |



North Syracuse Central School District Reopening Guidance

OUR PATH FORWARD: A COMMUNITY OVERCOMING COVID

COMMUNICATION (CONTINUED)

CONTACTING THE DISTRICT OFFICE AND SCHOOLS

The North Syracuse Central School District provides regular updates about safety, scheduling, and all other information families should be aware of on the District website at www.nscsd.org/updates. Stakeholders should refer to the District website for the most up-to-date COVID-19 information.

The North Syracuse Central School District advises families to use the New York State COVID-19 hotline at 1-888-364-3065 and asking to speak to someone about COVID-19. [Questions can also be submitted online.](#)

For general inquiries related to COVID-19, the District advises families to utilize the [Onondaga County Department of Health's designated COVID-19 website](#).

District-Wide Safety Coordinator

[Christopher R. Leahey, Ed.D.](#), Associate Superintendent for Teaching & Learning, will serve as the District-wide COVID-19 safety coordinator. Each building's principal will act as the COVID-19 safety coordinator for that building.

Building Safety Coordinators

[Allen Road Elementary School - Emily Lafountain](#)

[KWS Bear Road Elementary School - John Cole](#)

[Cicero Elementary School - Kathleen Wheeler](#)

[Lakeshore Road Elementary School - Tina Chmielewski](#)

[Roxboro Road Elementary School - Matt Motala](#)

[Smith Road Elementary School - Lyndsey Maloney](#)

[Gillette Road Middle School - David Cordone](#)

[Roxboro Road Middle School - Ashley Carducci](#)

[North Syracuse Junior High School - Connee Turose](#)

[Cicero-North Syracuse High School - Jamie Sullivan](#)

[North Syracuse Early Education Program - Dawn Hussein](#)

District-Wide & Building Safety Coordinators

The North Syracuse Central School District has designated a District-wide COVID-19 safety coordinator. Additionally, each building has a designated safety coordinator. Safety coordinators are responsible for continuous compliance with all aspects of the District's reopening plan, as well as any phased-in reopening activities necessary to allow for operational issues to be resolved before activities return to normal or "new normal" levels. Any questions should be referred to them.

Safety coordinators can answer questions regarding COVID-19 from students, faculty, staff and parents/legal guardians.

Each school nurse will also serve as their building's COVID-19 resource. The school nurse will be the main contact upon identification of a positive COVID-19 case. School nurses can be contacted by calling the building's health office.



North Syracuse Central School District Reopening Guidance

OUR PATH FORWARD: A COMMUNITY OVERCOMING COVID

COMMUNICATION (CONTINUED)

NSCSD DISTRICT-LEVEL COMMUNICATION SYSTEMS

The North Syracuse Central School District uses a variety of outgoing messaging systems to communicate with students, staff, parents and community members. The District recommends that families, staff and community members rely on its website, www.nscsd.org, as the primary source of District news. Additional messaging systems used by the District are listed below according to the level of message urgency.

| | | | |
|--------------------------|--|--|---|
| NSCSD Outgoing Messaging | | | SchoolMessenger - Don't miss an urgent message or weather delay/cancellation again! SchoolMessenger uses the parent/guardian information you have on file in SchoolTool to send emails and text messages. |
| | | | SchoolTool - Did you know you have the ability to view your child's class schedule, attendance, report card, discipline history, test scores and more through SchoolTool? Log in at https://cns.schooltool.cnyric.org/SchooltoolWeb/ . Make sure your information is up-to-date by filling out your student's information forms at the beginning of the school year and calling the school with updates. SchoolMessenger and Peachjar pull parent guardian information from SchoolTool to send messages. |
| | | | Peachjar - All schools have "Peachjars" for student flyers. With Peachjar, families never have to rely on students bringing information home in their backpacks...everything is kept in one online location and will stay there for future reference. Peachjar uses the parent/guardian information you have on file in SchoolTool to send emails. |
| NSCSD Social Media | | | YouTube - Make sure you check out our latest videos on the District's YouTube channel by going online to www.youtube.com/c/NorthSyracuseCentralSchoolDistrict . |
| | | | Twitter - The District has a Twitter page and many of our schools do as well. Feel free to follow us and share your good news with @NSyracuseCSD or find your child's school on Twitter! |
| | | | Facebook (@NSyracuseCSD) - We use our Facebook page to share news about students, staff, alumni success and lots of other good news. We also share lots of event photos and love to be tagged in your good news, too! |
| NSCSD Incoming Messaging | | | Tip411 - Do you have a tip that you'd like to submit to the District or one of our schools? Tip411 is a system through which anonymous tips can be emailed or text messaged to the District and schools. Learn more at www.nscsd.org/tips . |



North Syracuse Central School District Reopening Guidance

OUR PATH FORWARD: A COMMUNITY OVERCOMING COVID

HEALTH & SAFETY

CONSIDERATIONS

The North Syracuse Central School District is working to address health and safety concerns around COVID-19 through the District Re-Entry Committee's Workplace Safety and Proactive Infection teams. Community feedback was solicited in the form of a survey administered from July 17 through 24. State and local guidance was also followed in creating plans to address pertinent health and safety issues as shown in the chart below. Additional details are provided by clicking on the individual text boxes.

NSCSD Health and Safety Plans and Protocols will be adjusted as state and local guidelines require.



| HEALTH AND SAFETY CONSIDERATIONS | | | | | |
|---|---|---|---|---|---|
| Daily Health & Temperature Screenings |  | Hand Hygiene |  | Respiratory Hygiene |  |
| Restricted Areas |  | Return to School after Illness |  | Confirmed Case in Schools |  |
| Contact Tracing |  | School Health Office/Classroom Cleaning |  | PPE and Face Masks |  |
| Transportation |  | Social Distancing |  | Medically at Risk Individuals |  |
| Signs of Illness |  | Management of Ill Students or Staff |  | Building Visitors |  |



North Syracuse Central School District Reopening Guidance

OUR PATH FORWARD: A COMMUNITY OVERCOMING COVID

HEALTH & SAFETY (CONTINUED)

DAILY HEALTH AND TEMPERATURE SCREENINGS

The North Syracuse Central School District will implement protocols for mandatory health screenings, including the following:

Students

- Students will be required to have their temperatures checked before they enter District facilities each day. Please note that parents/legal guardians will also be required to ensure that their child(ren) are not experiencing any signs or symptoms of COVID-19 and do not have a temperature of 100.0 degrees or greater prior to them boarding their method of transportation to school; and
- Students or their parents/legal guardians will be required to complete an online weekly screening questionnaire, which will ask about COVID-19 symptoms, testing and exposure.

Faculty and Staff

- Faculty and staff will be required to have their temperatures checked before they enter District facilities each day; and
- Faculty and staff will be required to complete a daily paper screening questionnaire.

Visitors, Contractors and Vendors

- Visitors, contractors and vendors will be required to have their temperatures checked and must complete a paper screening questionnaire before entering District facilities. Any visitor, contractor or vendor with a temperature, signs of illness and/or a positive response to the health screening questionnaire will not be permitted to enter District facilities.



Screening Notes

- Schools and the District will periodically send messages/instructions to parents/guardians regarding signs of illnesses in their child that requires staying home from school.
- Any student, faculty or staff who screens positive for COVID-19 symptoms, or who presents with a temperature 100.0 degrees or greater, will not be allowed to enter the school if screened outside. Students who do not have an immediate method of transportation home will be brought to the school nurse for isolation and evaluation. Any student, faculty or staff who develops symptoms during the day will be sent for evaluation by the school nurse. Please see the Management of Ill Students or Staff at School section for further details.



North Syracuse Central School District Reopening Guidance

OUR PATH FORWARD: A COMMUNITY OVERCOMING COVID

HEALTH & SAFETY (CONTINUED)

HAND HYGIENE PLAN

The North Syracuse Central School District has built staggered hand washing times for students and staff into building schedules. Hand hygiene procedures have been enhanced to include:

- The preferred method of traditional hand washing (with soap and warm water, lathering for a minimum of 20 seconds);
- Use of alcohol-based hand sanitizers (60% or greater) will be available in all spaces lacking access to a hand washing station;
- The NSCSD will provide hand sanitizer throughout common areas, near high touch surfaces, and use touch free dispensers when possible;
- Signs will be posted near hygiene stations stating that visibly soiled hands should be washed with soap and water;
- Students or staff unable to use hand sanitizer will be permitted to wash their hands with soap and water; and
- The District will promote proper hand washing before and after meals, after recess or physical education, before and after removing PPE, and other times, as appropriate.

The North Syracuse Central School District will provide the following:

- Facilities and supplies for hand washing including soap and water;
- Paper towels and touch free paper towel dispensers where feasible (air dryers have been removed and disabled from all buildings);
- No-touch trash cans (no lid);
- Alcohol-based hand sanitizers with at least 60% alcohol or disinfectant hand wipes; and
- Time in the schedule to allow for frequent hand washing.

Students and staff will be trained on proper hand hygiene.

STUDENTS AND STAFF...DO YOU KNOW WHEN TO WASH?



- Upon entering the building OR upon arriving to the classroom;
- After using shared objects or surfaces (e.g. electronic devices, musical instruments, writing utensils, tools, toys, desks or table tops);
- Before and after snacks and meals;
- After using the bathroom;
- After helping a student with toileting;
- After sneezing, wiping or blowing nose, or coughing into hands;
- After coming in from outdoors; and
- Anytime hands are visibly soiled.



North Syracuse Central School District Reopening Guidance

OUR PATH FORWARD: A COMMUNITY OVERCOMING COVID

HEALTH & SAFETY (CONTINUED)

RESPIRATORY HYGIENE PLAN

The North Syracuse Central School District has developed procedures and protocols to encourage respiratory hygiene, including the following:

- All students and staff will be trained on proper respiratory hygiene, which will include instruction on covering mouths/noses with a tissue when coughing or sneezing and disposing of tissues appropriately. The District will provide tissues in each classroom and common area. If tissues are unavailable, using the inside of the elbow (or shirtsleeve) to cover the mouth or nose is preferable over using the hands;
- Open lid (no touch) trash receptacles are available in each classroom and common area;
- Students and staff should always perform proper hand hygiene after sneezing, coughing and handling dirty tissues or other soiled material; and
- Building windows will be opened when appropriate to improve ventilation.

SCHOOL HEALTH OFFICES

School nurses will serve as their building's COVID-19 resource for general questions. Health office numbers are provided below.



Cicero-N. Syracuse High
[Michelle Koslowski](#) (315) 218-4177
[Peg Puma](#) (315) 218-4103
[Kelly McClure](#) (315) 218-4178



Allen Rd. Elementary
[Anna Werksman](#) (315) 218-2303



Gillette Rd. Middle
[June Chamberlin](#) (315) 218-3013
[Karin Sherry](#) (315) 218-3013



Roxboro Rd. Elementary
[Kate Noel](#) and [Kathy LeBlanc](#)
(315) 218-2703



N. Syracuse Junior High
[Jody Barnes](#) (315) 218-3637
[Teresa Rodriguez](#) (315) 218-3637



KWS Bear Rd. Elementary
[Erin Christopher](#) (315) 218-2403



Lakeshore Rd. Elementary
[Suzy Sinay](#) and [Ruth Harding](#)
(315) 218-2600



Smith Rd. Elementary
[Barb Falinski](#) (315) 218-2803
[Christine McGarvey](#)



Roxboro Rd. Middle
[Michelle Hapanowich](#) (315) 218-3303
[Nanette Pucino](#) (315) 218-3333



Cicero Elementary
[Sally Jo Delpha](#) (315) 218-2503
[Christine McGarvey](#)



N. Syracuse Early Education
[Gayle Vinette](#) (315) 218-2213

SIGNS OF ILLNESS



- The North Syracuse Central School District will educate staff prior to opening schools to observe students or other staff members for signs of any types of illness such as: flush cheeks, rapid or difficulty breathing (without recent physical activity), fatigue and/or irritability; and frequent use of the bathroom. Students or staff exhibiting these signs with no explanation should be sent to the school Health office for assessment by the school nurse;
- As part of regular communication with families, the District will send weekly reminders of the signs and [symptoms of COVID-19](#). Parents will continually be reminded of CDC Guidance regarding when to keep students at home; and
- Clear signs will be posted throughout all buildings advising students and staff of the [symptoms \(of COVID-19\)](#) to look for when deciding if it is necessary to stay home.



North Syracuse Central School District Reopening Guidance

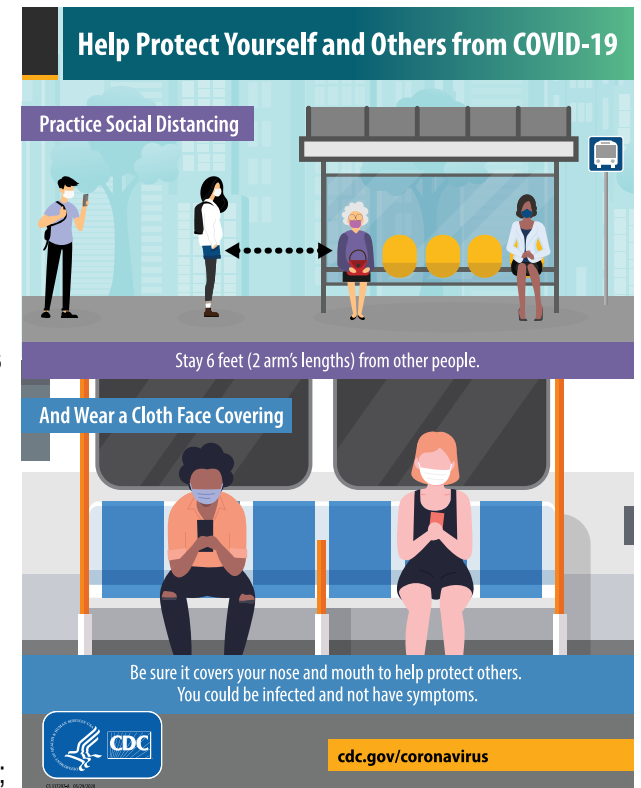
OUR PATH FORWARD: A COMMUNITY OVERCOMING COVID

HEALTH & SAFETY (CONTINUED)

SOCIAL DISTANCING

Social distancing is a key part of the North Syracuse Central School District's reopening plans. Social distancing is defined as keeping 6 feet of space between yourself and others. The District will take the following steps to encourage social distancing:

- Implement a staggered arrival plan including points of entry at each location;
- Implement a student drop-off plan;
- Reduce in-school movement where possible;
- Ensure that student groupings are as static as possible by having the same group/cohort of students stay together when possible. The size of groups/cohorts of students are determined by the number of students who can be in each classroom while maintaining 6 feet of physical distance;
- Utilize alternative spaces (LGI, gym, library, cafeteria, etc.) as available;
- Implement a staggered special area teachers plan;
- Develop a staggered restroom plan;
- Encourage the separation of individual student belongings and limit the use of shared supplies to one group of students;
- Utilize playgrounds when proper safeguards are in place (e.g., staggered use);
- Ensure that a distance of 12 feet in all directions is maintained between individuals while participating in activities that require projecting the voice (e.g., singing), playing a wind instrument or aerobic activity;
- Cancel any events that cannot be conducted within social distancing guidelines and other criteria listed herein;
- Separate classroom desks and turn desks to face the same direction in all rooms, including staff desks in faculty rooms;
- Restrict the use of classrooms and other places where students and staff gather (lockers, cubbies, entryways, hallways), so that individuals can be socially distanced; and
- Restrict gathering in small spaces (e.g., elevators, faculty offices) by more than one individual at a time unless all individuals in such space are wearing acceptable face coverings.



The District will implement proper signs throughout all buildings to remind students and staff to social distance. Free printable resources are available on the [CDC website](https://www.cdc.gov/coronavirus).



North Syracuse Central School District Reopening Guidance

OUR PATH FORWARD: A COMMUNITY OVERCOMING COVID

HEALTH & SAFETY (CONTINUED)

BUILDING VISITORS

The North Syracuse Central School District will take additional precautions for visitors, including the following:

- Visitors will be required to wear a cloth face covering whenever in District buildings, unless they are not medically able to tolerate a face covering. In that case, visitors can request an accommodation, which will be considered by the building principal;
- Visitors will be required to complete a health screening and have their temperature checked prior to entering any District building; and
- Visitors will not be permitted to enter any District facility if they screen positive by answering “yes” to any of the screening questions or exhibit a temperature of 100.0 degrees or greater.



In an effort to reduce the risk of COVID-19 exposure and to help prevent the spread of the virus, you may not enter this building if you have had any recent exposure to the COVID-19 virus.

Been in close or proximate contact in the past 14 days with anyone who has tested positive through a diagnostic test for COVID-19 or who has or had symptoms of COVID-19;

Experienced any symptoms of COVID-19, including a temperature of 100.0° degree F or greater, in the past 14 days; and/or

Tested positive through a diagnostic test for COVID-19 in the past 14 days;

Traveled internationally or from a state with widespread community transmission of COVID-19 per the New York State Travel Advisory in the past 14 days.

If any of the above circumstances apply to you, DO NOT enter this building.

Contact our offices by phone for further information and guidance.
Thank you for your cooperation.

Building visitors are limited to those approved by the building leader and require an appointment be made in advance. All visitors must comply with established safety protocols.



North Syracuse Central School District Reopening Guidance

OUR PATH FORWARD: A COMMUNITY OVERCOMING COVID

HEALTH & SAFETY (CONTINUED)

FACE COVERINGS

The North Syracuse Central School District will develop protocols for the use of face coverings, which will include the following:

- Employees, adult visitors, and students will be required to wear an acceptable face covering throughout the day while in school, subject to the exceptions;
- Students must wear a face covering while riding the school bus and while entering, exiting and seated, subject to the exceptions; and
- Students will wear masks while seated at their desks in their classrooms and mask breaks will be scheduled as necessary.

The District will take the following steps to implement its face covering protocols:

- Provide acceptable face coverings to faculty and staff who directly interact with students or members of the public while at work at no cost to faculty/staff;
- Provide acceptable face coverings to any student who does not have their own, at no cost to the student;
- Allow faculty, staff and students to use their own acceptable face covering; and
- Provide instructions on its website and signs throughout buildings relating to, among other things, proper use, care and disposal of face coverings, the importance of routine cleaning of reusable face coverings, and not sharing face coverings.

* The New York State Department of Health defines acceptable face coverings (to include but not limited to): cloth-based face coverings and surgical masks that cover both the mouth and nose. Face shields worn without other face coverings are not considered adequate protection or source control against COVID-19 and should not be used. However, students and staff may use alternate face coverings (e.g. transparent at or around the mouth) for instruction that requires visualization of the movement of the lips and/or mouths (e.g. speech therapy). Those coverings may also be used for certain students (e.g. hearing impaired) who benefit from seeing more of the face of faculty/staff.

FACE COVERING EXCEPTIONS



- Children younger than 2 years old will not be required to wear a face covering;
- Students will not be required to wear a face covering where such covering would impair their health or mental health, or where such covering would present a challenge, distraction, or obstruction to education services and instruction;
- Students, faculty or staff who are not medically able to tolerate a face covering will not be required to wear a face covering. Student requests for accommodations related to the face covering requirement should be made in writing to the building principal. Staff requests for accommodations related to the mask requirement should be made to Jason Nephew in Human Resources.



North Syracuse Central School District Reopening Guidance

OUR PATH FORWARD: A COMMUNITY OVERCOMING COVID

HEALTH & SAFETY (CONTINUED)

MEDICALLY VULNERABLE/HIGH-RISK

The North Syracuse Central School District will provide accommodations to students and staff in the school community that are medically vulnerable or within high-risk groups. The District will work with families to develop appropriate accommodations as necessary.

If a student has special needs or is medically fragile and may not be able to maintain social distance, hand or respiratory hygiene, or wear a face covering or mask, parents/guardians should work with their child's healthcare providers so that an informed decision can be made on how best to meet the child's needs at school while protecting their health and safety.

Student requests for ADA accommodations should be submitted in writing to the student's building principal along with documentation from their health care provider. Once an accommodation request is made, the District will coordinate with:

- School health services personnel;
- Special education personnel;
- Pupil personnel services; and
- Administration.

Staff requests for ADA accommodations should be submitted in writing to [Jason Nephew](#) in Human Resources. All requests must be submitted in writing along with documentation from your health care provider.

Potential accommodations may include, but are not limited to remote learning, telework, modified educational or work settings, or providing additional PPE.

Parent Requests for Remote Instruction
If you are choosing to not send your child to school, the District will provide remote instruction.

MULTISYSTEM INFLAMMATORY SYNDROME IN CHILDREN

The North Syracuse Central School District is aware of the symptoms of Multisystem Inflammatory Syndrome in Children (MIS-C) associated with COVID-19 which is a serious condition associated with COVID-19 in children and youth. Symptoms of MIS-C include, but are not limited to the following:

- Fever
- Abdominal pain
- Vomiting
- Diarrhea
- Neck pain
- Rash
- Bloodshot eyes
- Feeling extra tired



North Syracuse Central School District Reopening Guidance

OUR PATH FORWARD: A COMMUNITY OVERCOMING COVID

HEALTH & SAFETY (CONTINUED)

MANAGEMENT OF ILL STUDENTS OR STAFF AT SCHOOL

The North Syracuse Central School District will develop protocols for the management of ill students and staff, which will include the following:

Any student or staff who screens positive for COVID-19 symptoms, or who presents with a temperature of 100.0 degrees or greater, will not be allowed to enter the school if screened outside. Students who do not have an immediate method of transportation home will be brought to the school nurse for isolation and evaluation;

Any student or staff who demonstrates symptoms of illness while at school (e.g., temperature of 100.0 degrees or greater) will be required to go to the school health office for evaluation by a school nurse. The school nurse will determine whether the symptoms are related to chronic conditions such as asthma, allergies or chronic gastrointestinal conditions, rather than COVID-19. If the school nurse suspects that a student may have COVID-19:

- The student will be isolated in a room or area separate from others with a supervising adult present utilizing appropriate PPE awaiting pick up by a parent/guardian. If a separate room is not available, a distance of at least a 6 feet will be maintained between ill students and other persons;
- The student will be escorted from the isolation area to the parent/guardian; and
- The parent/guardian will be instructed to call their health care provider, or if they do not have a health care provider, to follow up with a local clinic or urgent care center.

If the school nurse suspects that a staff member may have COVID-19, the staff member will be sent home with instructions to contact his/her health care provider.

If a student or staff member demonstrates emergency warning signs such as trouble breathing, persistent pain or pressure in the chest, new confusion, inability to arouse, bluish lips or face, 911 will be called immediately.

If a school nurse is not available to conduct an assessment, the building principal or designee will isolate and dismiss any student or staff member who has a fever or other symptoms of COVID-19 for follow up with a health care provider.

If a student or staff member is sent home after demonstrating symptoms of COVID-19, they may return to school as discussed in the [Return to School After Illness](#) section.

The North Syracuse Central School District follows Education Law § 906, which provides whenever "...a student in the public schools shows symptoms of any communicable or infectious disease reportable under the public health law that imposes a significant risk of infection of others in the school, he or she shall be excluded from the school and sent home immediately, in a safe and proper conveyance. The director of school health services shall immediately notify a local public health agency of any disease reportable under the public health law7."

Effective February 1, 2020, the 2019-Novel Coronavirus was added to the Public Health Law as a significant threat to the public health, and the NYS Commissioner of Health designated 2019-Novel Coronavirus as a communicable disease under 10 NYCRR Section 2.1 direction or referral of such director, may make such evaluations of teachers and any other school employees, school buildings and premises as, in their discretion, they may deem necessary to protect the health of the students and staff.



North Syracuse Central School District Reopening Guidance

OUR PATH FORWARD: A COMMUNITY OVERCOMING COVID

HEALTH & SAFETY (CONTINUED)

CONFIRMED CASE OF COVID-19 IN SCHOOLS

The North Syracuse Central School District will implement the following action plan if a student or employee tests positive for COVID-19:

Employee Responsibilities

If an employee tests positive, they must:

- Notify the Assistant Superintendent for Human Resources immediately;
- Notify NSEA, NSTAA or appropriate union leadership;
- Provide NSCSD with information regarding their contacts at the Facility during the fourteen (14) days prior to the positive test;
- Provide NSCSD with a copy of any Order of Quarantine related to the diagnosis; and
- Communicate regularly with the Assistant Superintendent for Human Resources regarding their recovery.

Student/Parent Responsibilities

If a student tests positive, the student's parent and/or guardian must notify the building nurse immediately.

North Syracuse Central School District Responsibilities

If the District is notified that an employee or student tests positive, the District will:

Communicate

- Communicate with the local health authority about the confirmed case, potential closing of classrooms/areas, contact tracing, and return to work/school;
- Determine, in consultation with the local health authority, who must be notified about close or proximate contact with the confirmed case; and
- Communicate with the confirmed case about symptoms, progress, recovery, and discussions with the local health authority and other members of the community.

Contact Tracing

- The Assistant Superintendent for Human Resources will identify students, employees and visitors who have likely had close contact with the confirmed case during the fourteen (14) days prior to the positive test; and
- Communicate with the local health authority regarding its contact tracing and follow its guidance and recommendations.

Documentation

- Document all communication with the student, employee and/or the local health authority; and
- Determine whether the infection should be recorded pursuant to OSHA regulations.

Cleaning and Disinfection

- Close any building or work area as appropriate if there has been a confirmed case for a minimum of twenty four (24) hours before cleaning begins; and
- Perform cleaning and disinfection of all areas where the employee or student worked and any common areas where they would have been.



North Syracuse Central School District Reopening Guidance

OUR PATH FORWARD: A COMMUNITY OVERCOMING COVID

HEALTH & SAFETY (CONTINUED)

RETURN TO SCHOOL AFTER ILLNESS

The North Syracuse Central School District will adopt the following procedures for return to school after illness. If a student or staff member is symptomatic for COVID-19 but not diagnosed with COVID-19 by a healthcare provider (physician, nurse practitioner, or physician assistant), they can return to in-person education if the following conditions are met:

- The individual does not have a fever, without the use of fever reducing medicines, and they have felt well for 24 hours;
- The individual submits documentation from healthcare provider evaluation; and
- The individual submits proof of a negative COVID-19 test OR a Health Care Provider provides a written alternative diagnosis of a known chronic condition with unchanged symptoms or a laboratory-confirmed acute illness where COVID-19 is not suspected.

If a student or staff member is diagnosed with COVID-19 by a healthcare provider based on a positive test, they should not be at school and should stay home until:

- It has been at least ten days since the individual first had symptoms;
- It has been at least three days since the individual has had a fever (without using fever reducing medicine); and
- It has been at least three days since the individual's symptoms improved, including cough and shortness of breath.

If a student or staff member has been in close contact* with someone who has tested positive for COVID-19, they may return to in-person education after completing a fourteen-day quarantine, measured from their last contact with a person who has COVID-19. Please see applicable CDC guidance for information relating to this quarantine.

**Close is defined by the CDC as including:*

- Being within six feet of someone who has COVID-19 for at least 10 minutes;
- Providing care at home to someone who is sick with COVID-19;
- Having direct physical with the person (touching, hugging, kissing);
- Sharing eating or drinking utensils; or
- The positive individual sneezed, coughed or somehow got respiratory droplets on a person.

Individuals without "close or proximate" contact (as defined by the CDC) with the person suspected or confirmed to have COVID-19 can return to the area and resume school activities immediately after cleaning and disinfection.



North Syracuse Central School District Reopening Guidance

OUR PATH FORWARD: A COMMUNITY OVERCOMING COVID

HEALTH & SAFETY (CONTINUED)

CONTACT TRACING

The North Syracuse Central School District will cooperate with state and local health department contact tracing by taking the following actions:

- Keeping accurate attendance records of students and staff members;
- Ensuring student schedules are up to date;
- Keeping a log of any visitors which includes date, time and school visited;
- Assisting local health departments in tracing all contacts of a confirmed case at school in accordance with the protocol, training, and tools provided through the New York State Contact Tracing Program; and
- Maintaining confidentiality as required by federal and state laws and regulations.

School staff should not try to determine who is to be excluded from school based on contact without guidance and direction from the local department of health.

EARLY WARNING SIGNS/CLOSURE

The North Syracuse Central School District will collaborate with the Onondaga County Health Department to determine the parameters, conditions or metrics (e.g., increased absenteeism or increased illness in school community) that serve as early warning signs that positive COVID-19 cases may be increasing beyond an acceptable level.

The District will consider closing school if absentee rates impact the ability of the school to operate safely. North Syracuse Central School District may choose to modify operations prior to closing to help mitigate a rise in cases. The North Syracuse Central School District will consult our medical director and/or the local department of health when making such decisions.

In accordance with Board of Education Policy 5421, North Syracuse Central School District Staff must call for emergency transport (911) for any student showing any of these emergency warning signs of MIS-C or other concerning signs:

- Trouble breathing;
- Pain or pressure in the chest that does not go away;
- New confusion;
- Inability to wake or stay awake;
- Bluish lips or face; and/or
- Severe abdominal pain.



North Syracuse Central School District Reopening Guidance

OUR PATH FORWARD: A COMMUNITY OVERCOMING COVID

HEALTH & SAFETY (CONTINUED)

CLEANING AND DISINFECTING

The North Syracuse Central School District will follow the [CDC Reopening Guidance for Cleaning and Disinfection](#) with specific instructions for schools along with the [Cleaning and Disinfection Decision Tool](#) to aid in determining what level of cleaning and/or disinfection is necessary.

District cleaning includes classrooms, restrooms, offices, cafeterias, libraries, playgrounds, common areas and buses.

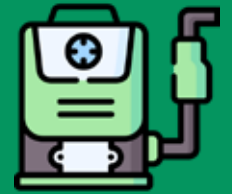
To ensure appropriate cleaning and disinfection the District will do the following:

- Perform normal routine cleaning with soap and water to decrease how much of the virus is on surfaces and objects, thereby reducing the risk of exposure;
- Provide disinfection using US Environmental Protection Agency (EPA)-approved disinfectants against COVID-19;
- Provide more frequent cleaning and disinfection of high risk areas and frequently touched surfaces;
- Keep all disinfectants out of the reach of children;
- Maintain logs that include date, time, and scope of cleaning/disinfection in a facility or area; and
- Develop a schedule for cleaning and disinfection and assign responsibility.

CLEANING FOR HEALTH

Cleaning for Health reflects a global value. The District will assume the responsibility for the cleaning and disinfection of its facilities. To provide such cleaning, our staff must provide a “quality cleaning performance.” That performance removes impurities from the environment, leaves behind minimum cleaning residue, and in no way jeopardizes the health and safety of its occupants. Cleaning is the process of removing impurities from the environment and putting them in their proper place. Cleaning occurs after the impurities have entered the environment; Identifying, capturing, containing, removing and disposing of the impurities completes the cleaning process. Cleaning is not diluting impurities by dispersing them over a larger area, allowing them to remain, cleaning is removing them.

CLEANING FOR HEALTH GUIDELINES



- Provide for the safety of all building occupants before, during and after the cleaning operations.
- Clean for health first and appearance second.
- Maximize extraction of impurities from facility.
- Minimize chemical, particle and moisture residue.
- Minimize occupant exposure to contaminants, cleaning chemicals and cleaning residue.
- Dispose of cleaning waste properly.
- Yearly staff training.



North Syracuse Central School District Reopening Guidance

OUR PATH FORWARD: A COMMUNITY OVERCOMING COVID

HEALTH & SAFETY (CONTINUED)

CLEANING AND DISINFECTING (CONTINUED)

The North Syracuse Central School District will take the following steps to ensure enhanced cleaning measures are in place for the 2020-2021 school year:

- Each building will have a Total 360 electrostatic disinfection machine for areas of concern;
- K-12 classrooms, health offices and OT/PT rooms, speech offices, AIS offices/classrooms, school psychologist and counseling offices will be cleaned with Clarion25 floor wax with microban technology to reduce the spread bacteria and other germs;
- All custodians will be utilizing new mopping systems to separate cleaning solution from dirty water to create a healthier, more efficient process;
- All paper towel dispensers will be replaced with touchless mechanical dispensers;
- HVAC filters have been upgraded to a higher MERV rating per state guidance; and
- ATP monitoring (rapid testing method used to quickly assess the cleanliness of a surface) technology will be in place to monitor and verify cleaning efficiency.

Where feasible, staff will have access to additional cleaning and disinfecting supplies to meet the demands of new cleaning protocols. Staff and students will have supervised access to hand sanitizer and disinfectant wipes in areas where access to sinks is not practical. Students should not be present when disinfectants are in use and should not participate in cleaning and/or disinfection activities.

Individual staff members are authorized to open windows as directed by the building administration. Teachers will also coordinate outdoor instruction through the building administrator.

There will be no shared wind musical instruments.

ENHANCED CLEANING



In addition to normal nightly cleaning for health protocols, the District has increased the frequencies of disinfecting high traffic, high touch areas during the school day.

Examples of high touch surfaces include:

- Tables
- Doorknobs
- Light switches
- Counter tops
- Handles
- Desks
- Phones
- Keyboards and tablets
- Toilets and restrooms
- Faucets and sinks
- Restrooms



North Syracuse Central School District Reopening Guidance

OUR PATH FORWARD: A COMMUNITY OVERCOMING COVID

HEALTH & SAFETY (CONTINUED)

SCHOOL HEALTH OFFICE

The North Syracuse Central School District will ensure that the School Health Office cleaning is performed after each use of the following items:

- Cots;
- Bathroom; and
- Health office equipment (e.g. blood pressure cuffs, otoscopes, stethoscopes, etc.)

Disposable items should be used in the health office as much as possible including:

- Disposable pillow protectors;
- Disposable thermometers, or disposable thermometer sheaths or probes; and
- Disposable otoscope specula.

Nebulizer Treatments

Nebulizer treatments at school should be reserved for children who cannot use or do not have access to an inhaler (with or without spacer or face mask).

NSCSD Nurses will be provided the appropriate personal protective equipment (PPE) to administer Nebulizer treatments and peak flow meters to students with asthma. PPE for use when administering Nebulizer treatments or peak flow meters to students with asthma consists of gloves, medical or surgical facemask and eye protection. If a Nebulizer treatment or use of peak flow meter is necessary at school for a student, the number of people present in the room should be limited to the student and the staff member administering the treatment or peak flow meter. If appropriate based on the student's age and level of maturity, the staff member could leave the room and return when the Nebulizer treatment is finished. After the Nebulizer treatment or use of peak flow meter, this room should undergo routine cleaning and disinfection.



North Syracuse Central School District Reopening Guidance

OUR PATH FORWARD: A COMMUNITY OVERCOMING COVID

FACILITIES

COMPLIANCE WITH BUILDING REGULATIONS

1. The North Syracuse Central School District will comply with the requirements of the 2020 New York State Uniform Fire Prevention and Building Code (BC) and the State Energy Conservation Code and submit all changes to Office of Facilities Planning (OFP). The District does not intend to make changes that would result in code violations.
2. The District will ensure compliance with the 2020 Building Condition Survey and Visual Inspection, where applicable. The District's Building Conditions Survey (BCS) is in progress and will be completed on time.
3. The District will make provisions to conduct the Lead-In-Water Testing as required by NYS DOH regulation 67-4. Testing will continue as soon as students return to school buildings.
4. The District will ensure all existing and new Alcohol-based Hand-Rub Dispensers are installed in accordance with FCNYS 2020 Section 5705.5. Dispensers will be located in supervised areas as per the regulation.
5. The District will ensure the installation dividers in classrooms, libraries, cafeterias, auditoriums, gymnasiums, doors, and other points of congregation will comply with regulations. The District will also ensure the submission of detailed floor plans to OFP for review. The District will work with its architect to comply with this requirement as the need for these dividers arises.
6. The District will ensure that all new building construction and temporary quarter projects will be submitted to OFP for a full code review. At this time the District has no need of temporary quarter or additional new construction to accommodate the modified educational models.
7. The District will consult with OFP for a preliminary evaluation in the event that new facilities for leasing are considered. At this time the District has no need of new leased facilities to accommodate the modified educational model.
8. In the event there is a need for the temporary or permanent use of Tents, the District will provide plans adhering to the BCNYS. At this time the District has no need of tents to accommodate the modified educational models.
9. The District will ensure that all existing toilet and sink fixtures that remain in place and available are in accordance with the minimum standards of the BCNYS occupancy requirements. Some fixtures may be taken out of service or isolated with partitions as allowed.
10. The District will ensure that each building provides one drinking fountain per one hundred occupants or provide a written plan for a reasonable alternate source of drinking water. We have or will be updating existing drinking fountains to include bottle refill stations where possible. Bubblers will be disabled or covered. Supplemental water stations will be placed throughout the building where required to ensure one drinking fountain per one hundred occupants. Paper cups and / or water bottles will be made available for use.
11. The District will provide written plans on how to maintain adequate, code required ventilation (natural or mechanical) as designed. District facilities have existing mechanical ventilation. Fresh air dampers will be adjusted to maximize fresh air while maintaining proper operation of systems. Areas with inadequate ventilation will be identified and assessed for modification and or use of temporary supplemental systems. Nurse's offices and isolation rooms will be equipped with independent HEPA filters.
12. The District will ensure that all project submissions only dedicated to "COVID-19 Reopening" will be labeled as such.
13. The District will ensure the use of plastic separators in compliance with 2020 BCNYS Section 2606, restricting partition materials to those products that comply i.e. polycarbonate.



North Syracuse Central School District Reopening Guidance

OUR PATH FORWARD: A COMMUNITY OVERCOMING COVID

CHILD NUTRITION

CHILD NUTRITION

The North Syracuse Central School District will ensure that all students enrolled in the School Food Authority (SFA) have access to school meals each school day. This includes students in attendance at school, as well as students learning remotely. The District will comply with Child Nutrition Program (CNP) requirements and will take measures to protect students with food allergies in the event that meals are served outside the cafeteria. Protocols to communicate with families through multiple means in the languages spoken by families will be developed.

All school kitchens and warehouses in the North Syracuse Central School District will operate in compliance with Onondaga County Board of Health regulations and safety guidelines. Enhanced cleaning guidelines for cafeterias and classrooms include the following:

- Students will be asked to wash/sanitize hands before and after eating;
- Food service staff will adhere to cleaning and disinfecting guidelines set forth by the DOH and CDC;
- Where necessary, trash receptacles will be emptied after breakfast and lunch;
- Food service staff delivering meals will be required to wear gloves, plastic aprons and face masks;
- Adequate supplies of face masks, soap, hand sanitizer and tissues will be available in all food service areas; and
- Food service staff will be trained on District policies and procedures for health and safety.

Each school will follow established protocols and procedures for students performing hand hygiene. These protocols will be followed before and after eating. Hand hygiene will be promoted and food sharing between students will be prohibited. In addition, signs in the classroom will convey these messages.

The District will limit the provision of meal service in common areas where practicable.

Each school in the District will comply with NYS School Breakfast Program (SBP) and the National School Lunch Program (NSLP.) Both of these programs are overseen by the Child Nutrition Program.

The District will continue to post menus on the District's website. In addition, communications relating to child nutrition will be made available through multiple methods in the languages spoken by families.

Each school will require that students social distance (6 feet separation) while consuming meals in school.

STUDENT ALLERGIES



Each school will take measures to protect students with food allergies when providing meals in spaces outside the cafeteria.

Allergy Plan:

- Food service staff will discontinue the use of peanut butter or peanut products for meals delivered to classrooms.
- Parents should exclude peanut butter from meals brought into the classroom from home.
- Food service staff delivering meals will have coded classroom rosters that display any known food allergens of each student.
- School nurses will provide teachers with a listing of student allergies.
- Alternate food items will be substituted per doctors notes an allergy indication (i.e. Lactaid replaced for milk, gluten free bread used for sandwiches.)



North Syracuse Central School District Reopening Guidance

OUR PATH FORWARD: A COMMUNITY OVERCOMING COVID

CHILD NUTRITION (CONTINUED)

CLASSROOM FOOD DELIVERY PLAN

The North Syracuse Central School District will establish the following classroom food delivery plan:

- Meal orders will be submitted by either teachers or parents;
- The District requests that parents prepay for meals via My School Bucks (bank fees waived) or by check to limit the handing of cash in the classroom. Meals will be free for eligible students, all others will require payment;
- Breakfast and lunch will be distributed by food service staff following DOH guidelines and protocols;
- All meals will be compliant with the SBP and NSLP;
- Staff distributing meals will wear face masks, disposable aprons and gloves;
- Coded rosters will be used to account for each child's meal status as it is distributed;
- Classrooms will be cleaned daily;
- Peanut butter will not be allowed in any classroom due to allergy concerns;
- Sharing of food items/beverages will not be allowed and students will remain seated while eating and maintain 6 feet of social distance. Signs will be used to kindly remind student not to share items;
- Ala Carte sales will be discontinued until normal cafeteria operations can resume;
- All coolers and carts used for meal distribution will be sanitized daily; and
- Meal service (including Grab and Go) will not be available on days the District is closed.

OFF-SITE GRAB AND GO MEAL PROGRAM

The District will provide breakfast and lunch meals for students not in attendance:

- Meal pick-up/delivery will be available five days per week during specified days and times;
- Meals will be free for eligible students, all others will require payment;
- The District may deliver meals to students' homes who have been asked to quarantine for 14 days;
- All meals will be compliant with the SBP and NSLP;
- Coded rosters will be used to account for each child's meal status as it is distributed;
- Staff distributing meals will wear face masks, disposable aprons and gloves;
- All coolers and carts used for meal distribution will be sanitized daily; and
- Meal service (including Grab and Go) will not be available on days the District is closed.



ENHANCED CLEANING FOR FOOD SERVICE

- Students will be asked to wash/sanitize hands before and after eating.
- Food service staff will adhere to cleaning and disinfecting guidelines set forth by the DOH and CDC.
- Where necessary, trash receptacles will be emptied after breakfast and lunch.
- Food service staff delivering meals will be required to wear face masks, gloves and plastic aprons.



North Syracuse Central School District Reopening Guidance

OUR PATH FORWARD: A COMMUNITY OVERCOMING COVID

TRANSPORTATION

TRANSPORTATION SAFETY

The North Syracuse Central School District will ensure that all buses are cleaned/disinfected once a day. Bus drivers will be required to wipe down high contact areas after each run depending upon the disinfection/cleaning schedule.

School bus drivers, monitors and attendants will wear face masks at all times while operating the bus with students on board and when they are within 6 feet of fellow employees, students or community members. Mechanics will wear face masks along with optional face shields when they are within 6 feet of another person. The District will provide personal protective equipment (PPE), such as masks, gloves and optional face shields, for transportation staff, including drivers, monitors, attendants, mechanics and cleaners.

Transportation staff will be trained on and provided with periodic refreshers regarding the proper use of PPE, signs and symptoms of COVID-19 and proper social distancing.

The District's Safe Transportation Plan includes the following:

- Hand sanitizer will be provided to all staff in their transportation locations such as dispatch offices, at check in windows and/or bus garages;
- Drivers, monitors and attendants who have direct physical contact with children will wear gloves;
- Drivers, monitors, attendants and mechanics will perform a self-health assessment for symptoms of COVID-19 before arriving to work;
- Students will wear a mask on a school bus if they are physically able. Students who do not have masks will be provided one by the District. Each driver will be given a supply of masks for students without PPE. Students who do not have a mask will NOT be denied transportation;
- Students with a disability which would prevent them from wearing a mask will not be forced to do so or denied transportation;
- District students will be trained on and provided with periodic refreshers on the proper use of PPE, signs and symptoms of COVID-19 and proper social distancing. The District will train the drivers and the drivers will train the students;
- Students will maintain 6 feet of social distance while on a bus, unless they are members of the same household; and
- Wheelchair school buses must configure wheelchair placement to ensure social distancing of 6 feet.



HAND SANITIZER AND BUSES

- North Syracuse Central School District school buses will NOT be equipped with hand sanitizer due to its combustible composition and potential liability to the carrier or District.
- School bus drivers, monitors and attendants will be trained and instructed to NOT carry personal bottles of hand sanitizer with them on school buses.

Whenever school is in session (remotely or in-person) pupil transportation must and will be provided to nonpublic, parochial, private, and charter schools students as well as those whose Individualized Education Program has placed them out of the NSCSD but whose alternate school is conducting in-person education sessions although the District is not.



North Syracuse Central School District Reopening Guidance

OUR PATH FORWARD: A COMMUNITY OVERCOMING COVID

SOCIAL & EMOTIONAL WELLNESS

CARE FIRST

In planning for a return to school at any level, the North Syracuse Central School District sought to keep the social and emotional well being of students and staff at the center of planning. Our mission in creating this document has been to first ensure that the physical, emotional and psychological needs of students and staff are met, so that teaching and learning can happen.

Under the direction of the NSCSD Re-Entry Committee, the Social and Emotional Wellness sub-committee will create comprehensive district-wide and building-level school counseling program plans. The group is comprised of parents, school building and district leaders, teachers, certified school counselors, and other service providers including school social workers and school psychologists. Plans are being developed under the direction of certified school counselor(s), will be reviewed and updated to meet current needs.

The Re-Entry Committee's Social and Emotional Wellness group will provide resources and referrals to address mental health, behavioral, and emotional support services and programs. All such resources will be available online through the District's website. The website will be updated regularly by [Lisa Goldberg](#), the District's Director of Social Emotional Learning and Social Studies.

The District will provide professional development opportunities for faculty and staff on how to talk with and support students during and after the ongoing COVID-19 public health emergency, as well as provide supports for developing coping and resilience skills for students, faculty, and staff.



SUPPORT FOR SOCIAL EMOTIONAL LEARNING(315) 218-2134

[Lisa Goldberg](#), Director of Social Emotional Learning and Social Studies



North Syracuse Central School District Reopening Guidance

OUR PATH FORWARD: A COMMUNITY OVERCOMING COVID

TECHNOLOGY & CONNECTIVITY

TECHNOLOGY & CONNECTIVITY

The North Syracuse Central School District understands the critical role technology plays in providing high-quality online instruction. To meet the needs of staff members, students and families it will take the following steps to ensure students and staff have adequate devices and connectivity to support online instruction:



Survey

Staff and parents will be surveyed to determine access to devices and high speed internet



Provide

To the extent practicable, the District will provide devices and internet access to students and faculty who do not have sufficient access.



Support

The District will have multiple ways for students to participate in remote learning and demonstrate mastery of learning outcomes in remote or hybrid models. Building principals will work directly with families to support their needs.



Technology Resources

The North Syracuse Central School District has a variety of resources available for students and families regarding the systems used for online instruction:

- [Google Classroom Cheat Sheet for Students](#)
- [The Parents' Guide to Google Classroom](#)
- [Navigating Google Classroom for Students](#)
- [Student help logging into NSCSD accounts](#)
- [FAQ's and Parent Help Section](#)



North Syracuse Central School District Reopening Guidance

OUR PATH FORWARD: A COMMUNITY OVERCOMING COVID

TEACHING & LEARNING

TEACHING & LEARNING

The North Syracuse Central School District ensures that all schools have continuity of learning plans for in-person, hybrid and remote learning. Equity will be a primary consideration throughout the 2020-2021 school year and in the event of a school closure.



NYS Standards

Instruction will be standards-based and aligned with an academic program with learning outcomes from the New York State Learning Standards.

Early Learning

Pre-k programs affiliated with NSCSD (North Syracuse Early Education Program, Learn as you Grow sites, and Northminster Early Childhood Center) will provide written plans attesting that measures are in place to follow health and safety guidelines from NYS Department of Health. Pre-k programs will also provide a continuity of learning plan addressing in-person, hybrid, and remote models of instruction. Plans will be submitted to the Office of Early Learning once available.



Teacher Interaction

Instruction will be developed so that whether it is delivered in-person, a hybrid model, or remotely, there will be clear opportunities for instruction accessible to all students that includes regular and substantive interaction with a certified teacher. Instruction will have routine scheduled times for students to interact with and seek feedback and support from teachers.



Academic Intervention Services

NYS Assessments in grades 3-8 were not administered in the 2019-20 school year; therefore, NSCSD will use a district developed procedure to be applied uniformly at each grade level for determining which students are entitled to AIS services. NSCSD will consider students' scores on multiple measures of student performance, which include, but are not limited to, one or more of the following measures: Developmental reading assessment, Benchmark and lesson embedded assessments, Common formative assessments, Unit and lesson assessments, Results of psychoeducational evaluations, Diagnostic screening for vision, hearing, and physical disabilities as well as screening for possible disabilities pursuant to Commissioners Regulations Part 117



Communication

Each NSCSD school will create a clear communication plan for how students, families, and caregivers can contact the school and teachers with questions about their instruction or technology needs. This information will be available to all, offered in multiple languages, and disseminated in both print and electronic format.

Grading

NSCSD will have a consistent grading policy for the 2020-2021 for in-person instruction, a hybrid model, or remote learning. In grades K-4 a trimester standards-based report card will be available for each student. In grades 5-12 students will receive a numerical grade in a quarterly report card.





North Syracuse Central School District Reopening Guidance

OUR PATH FORWARD: A COMMUNITY OVERCOMING COVID

SPECIAL EDUCATION

SPECIAL EDUCATION

The North Syracuse Central School District will offer special education programs and related services to students with a disabilities either in-person, remotely or using a hybrid model consistent with DOH health and safety guidance.

The District will continue to maintain clear, ongoing communication with parents to ensure access to special education programs and services and continue to offer Free and Appropriate Public Education (FAPE) for students with disabilities.

The District will continue to select parents' preferred language or mode of communication when reaching out to families.

The District will collaborate with parents ensuring that students continue to be provided FAPE consistent with the need to protect the health and safety of students and their service providers.

The District will review its instructional practices to plan for the necessary accommodations and modifications for students with disabilities to progress in the general education curriculum.

The District will ensure collaboration between the committees on preschool special education (CPSE) and committees on special education (CSE) and program providers representing the variety of settings where students are served to ensure there is an understanding of the provision of services consistent with the recommendations on individualized education programs (IEPs), plans for monitoring and communicating student progress, and commitment to sharing resources.

The District will determine how it will document the programs and services offered and provided to students with disabilities as well as communications with parents, in their preferred language or mode of communication.



Special Education Resources

[Additional information about special education programming and resources in the North Syracuse Central School District can be found online.](#)

SPECIAL EDUCATION OFFICE(315) 218-2144

[Valerie DiFlorio](#), Executive Director for Pupil Personnel Service (315) 218-2144

[Janet Brefka](#), Director of Special Education (315) 218-214



North Syracuse Central School District Reopening Guidance

OUR PATH FORWARD: A COMMUNITY OVERCOMING COVID

APPR & ATTENDANCE

TEACHER & PRINCIPAL EVALUATION SYSTEMS

In an effort to ensure ongoing effective teaching practice, the North Syracuse Central School District will fully implement its current APPR plan while continuing dialogue and consideration of the following:

- Student Performance Measurements;
- Consideration of a full year's growth under the conditions of the model adopted;
- Review priority areas and the observation/evaluation process under the conditions of the model adopted; and
- Maintaining appropriate certification requirements under any remote or hybrid model.



Attendance

The North Syracuse Central School District will comply with requirements for student attendance and student teacher engagement. The District will adopt the following procedure:

When students attend school in person, homeroom or first period teachers will take daily attendance. In a hybrid or remote learning model, a designated staff member will manage daily student attendance. This will be accounted for in our student management system. For students who are absent, phone calls from our student management system will be made. If a student is absent for several days, an attendance aide will contact parents/guardians. Families of chronically absent students will be contacted by a school administrator in order to ascertain the reason for absences and to encourage attendance. The District will mail attendance letters to the families of chronically absent students who are unable to be reached and child protective services will be contacted as necessary.



North Syracuse Central School District Reopening Guidance

OUR PATH FORWARD: A COMMUNITY OVERCOMING COVID

BILINGUAL EDUCATION & WORLD LANGUAGES

BILINGUAL EDUCATION AND WORLD LANGUAGES

In an effort to continue offering equitable access and continuity of learning for English Language Learners (ELLs), the North Syracuse Central School District will modify and expand its ELL identification process to include an online screening using multiple ENL staff. Screenings will include a combination of a District-created questionnaire and interview along with a NYSITELL assessment as a work sample.

The District has made additional considerations regarding ELLs based on whatever instructional learning model is in place. Upon reopening, if the NSCSD adopts a fully virtual instructional model, the process above will be continued. If the NSCSD adopts a hybrid instructional model, all new entrants will be re-screened during the first 30 days using the full NYSITELL. The re-screening schedule will take place in the following order: spring 2020 new entrants, summer 2020 new entrants, fall 2020 new entrants arriving within the first 20 days.

The District will work to ensure that any hybrid or remote model put in place will provide ELLs with the same Units of Study requirement as received at the time of closure in the spring of 2020.

The District will ensure ongoing and supportive communication and language access with all ELL families. The District will strive to improve family partnerships and improve communication by eliciting information from ELL parents during the summer of 2020 to verify each family's address, preferred language for communication, preferred mode of communication, and level of either understanding or support needed for parents regarding technology use.

The District will utilize available technology and resources to provide interpretation/interpreters for (but not limited to) written communications as well as other parent needs including conferences, virtual events and technology support. The District will maintain an ongoing record of communication between home and school.



Supporting our Teachers

The North Syracuse Central School District will continue providing professional learning for educators both directly and indirectly servicing our English Language Learners to include a combination of online and in-person offerings focusing primarily upon:

- Utilizing technology to promote student independence and engagement
- Providing effective and meaningful feedback
- Promoting peer-to-peer interactions.
- Improving collaborative models of instruction and co-teaching
- Improving progress monitoring
- Increasing understanding of language based strategies for using all four modalities
- Building positive relationships/rapport



North Syracuse Central School District Reopening Guidance

OUR PATH FORWARD: A COMMUNITY OVERCOMING COVID

BILINGUAL EDUCATION & WORLD LANGUAGES (CONTINUED)

BILINGUAL EDUCATION AND WORLD LANGUAGES

The North Syracuse Central School District will ensure ongoing progress monitoring to include the following:

- Analyzing data from current district progress monitoring tools;
- Implementing the Ellevation system; and
- Utilizing the Multilingual Literacy Screener where appropriate for all ELLs on a temporary basis.

The District will provide ongoing and appropriate use of educational technology to enhance engagement and learning including, but not limited to:

- | | |
|----------------------|------------------------|
| • Zoom | • Razz Kids |
| • Imagine Learning | • BOOM cards |
| • Talking Points | • Vocaroo |
| • Seesaw | • Google Hangouts/Meet |
| • Unite for Literacy | • BrainPop |
| • Screencastify | |
| • Pebble Go | |



ENGLISH AS A NEW LANGUAGE(315) 218-2165

The North Syracuse Central School District's Director of Instructional Leadership, David Lunden, oversees the English as a New Language (ENL) Program. [More information about ENL can be found online by clicking here.](#) For copies of this document in other languages, please contact [David Lunden by email](#) or by telephone using the number listed above.



North Syracuse Central School District Reopening Guidance

OUR PATH FORWARD: A COMMUNITY OVERCOMING COVID

EARLY LEARNING

EARLY LEARNING

Early learning is an essential starting point for our students. The North Syracuse Central School District oversees the North Syracuse Early Education Program at Main Street School - a 4410 program serving preschool children with disabilities alongside non-disabled peers. The District also oversees Universal Pre-Kindergarten (UPK) community partners at Learn as You Grow and Northminster Early Childhood Center. We are committed to providing a high quality early learning experience in a safe and healthy environment. To that end, our early learning partners will provide the following assurances for the 2020-2021 school year:

- A continuity of learning plan;
- Instruction aligned with NYSED standards;
- Equity will be at the heart of instructional decisions;
- Instruction will be delivered in-person, remotely, an/or in a hybrid model per continuity of instruction agreement;
- Instruction will provide substantive and regular interaction;
- Our Pre-K partners will develop and share a clear communication plan;
- All Pre-K programs will submit a reopening plan to the Office for Early Learning (forthcoming);
- Community-based partners (Learn as You Grow and Northminster Early Childhood Center) will follow the New York State Department of Health safety guidelines (plan forthcoming.)

BEFORE AND AFTER SCHOOL PROGRAMMING

The North Syracuse Central School District also offers before and after school programming operated by our partners at the YMCA. The District will require the YMCA to provide assurances regarding social distancing, PPE usage and cleaning and disinfection.



North Syracuse Central School District Reopening Guidance

OUR PATH FORWARD: A COMMUNITY OVERCOMING COVID

SCHOOL SCHEDULES

LEARNING OPTIONS



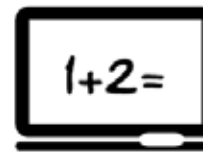
In-Person

NSCSD students will all attend full-time in-person instruction provided in school everyday.



Hybrid

On defined days, some NSCSD students will learn remotely and others will attend in-person instruction in school.



Remote

NSCSD students will receive all instruction online and learn remotely.

The District will share scheduling plans with students, families, and staff in a timely manner in order to accommodate childcare and work arrangements before the start of the school year and anytime a change is required. NSCSD is prepared to shift between models should circumstances change and schools need to be closed.

Hybrid Learning

COVID-19 and health and safety guidelines require schools to make critical adjustments to their instructional model to ensure health and safety of our students and staff. Scheduling decisions must be informed by health and safety standards and the most up-to-date guidance from the New York State Department of Health.

Throughout the year, NSCSD may offer instruction in-person at school, hybrid (i.e., in person at school and online for a portion of the week), and remotely (completely online). Accommodations will be made for students with medical conditions and unique needs. After reviewing social distancing guidelines, available space, and staffing, the following hybrid models will be used throughout the 2020-2021 school year. Click the links below to view the grade-level hybrid model for:

[Elementary Level Students](#)

[Middle School Level Students](#)

[Junior High School Level Students](#)

[High School Level Students](#)



North Syracuse Central School District Reopening Guidance

OUR PATH FORWARD: A COMMUNITY OVERCOMING COVID

ELEMENTARY SCHEDULING

ELEMENTARY SCHOOL HYBRID INSTRUCTIONAL MODEL

| | MONDAY | TUESDAY | WEDNESDAY | THURSDAY | FRIDAY |
|---------|--------|---------|-----------|----------|--------|
| Group 1 | ★ | ★ | | | |
| Group 2 | | | | ★ | ★ |
| Group 3 | ★ | ★ | ★ | ★ | ★ |
| Group 4 | | | | | |

Attends School In-Person
 Remote Learning

The majority of NSCSD students will learn from home on Wednesdays so that buildings can be thoroughly cleaned and disinfected.

Student placement in Groups 1, 2 and 3 will be announced in August. The District is making considerations to keep families on the same learning schedule.

STUDENT GROUPS



Group 1 students attend school on Monday and Tuesday; remote learning takes place Wednesday, Thursday and Friday.



Group 2 students attend school on Thursday and Friday; remote learning takes place Monday, Tuesday and Wednesday.



Group 3 students are those in special class settings (12:1:4 and 15:1:1) whose instructional program is best accomplished in a self-contained setting. These students attend school on Monday, Tuesday, Wednesday, Thursday and Friday.



Group 4 students have chosen to learn remotely 100% of the time.

ELL students will be provided the required instructional Units of Study in their ENL program through both in-school and remote learning environments.



North Syracuse Central School District Reopening Guidance

OUR PATH FORWARD: A COMMUNITY OVERCOMING COVID

MIDDLE SCHOOL SCHEDULING

MIDDLE SCHOOL HYBRID INSTRUCTIONAL MODEL

| | MONDAY | TUESDAY | WEDNESDAY | THURSDAY | FRIDAY |
|---------|--------|---------|-----------|----------|--------|
| Group 1 | ★ | ★ | 💻 | 💻 | 💻 |
| Group 2 | 💻 | 💻 | 💻 | ★ | ★ |
| Group 3 | ★ | ★ | ★ | ★ | ★ |
| Group 4 | 💻 | 💻 | 💻 | 💻 | 💻 |

Attends School In-Person
 Remote Learning

The majority of NSCSD students will learn from home on Wednesdays so that buildings can be thoroughly cleaned and disinfected.

Student placement in Groups 1, 2 and 3 will be announced in August. The District is making considerations to keep families on the same learning schedule.

STUDENT GROUPS



Group 1 students attend school on Monday and Tuesday; remote learning takes place Wednesday, Thursday and Friday.



Group 2 students attend school on Thursday and Friday; remote learning takes place Monday, Tuesday and Wednesday.



Group 3 students are those in special class settings (12:1:4 and 15:1:1) whose instructional program is best accomplished in a self-contained setting. These students attend school on Monday, Tuesday, Wednesday, Thursday and Friday.



Group 4 students have chosen to learn remotely 100% of the time.

ELL students will be provided the required instructional Units of Study in their ENL program through both in-school and remote learning environments.



North Syracuse Central School District Reopening Guidance

OUR PATH FORWARD: A COMMUNITY OVERCOMING COVID

JUNIOR HIGH SCHOOL SCHEDULING

JUNIOR HIGH SCHOOL HYBRID INSTRUCTIONAL MODEL

| | MONDAY | TUESDAY | WEDNESDAY | THURSDAY | FRIDAY |
|---------|--------|---------|-----------|----------|--------|
| Group 1 | ★ | | | | |
| Group 2 | | ★ | | | |
| Group 3 | | | | ★ | |
| Group 4 | | | | | ★ |
| Group 5 | ★ | ★ | ★ | ★ | ★ |
| Group 6 | | | | | |

Attends School In-Person
 Remote Learning

The majority of NSCSD students will learn from home on Wednesdays so that buildings can be thoroughly cleaned and disinfected.

Student placement in Groups 1-5 will be announced in August. The District is making considerations to keep families on the same learning schedule.

STUDENT GROUPS

- ★ **Group 1** students attend school on Monday; remote learning takes place Tuesday, Wednesday, Thursday and Friday.
- ★ **Group 2** students attend school on Tuesday; remote learning takes place Monday, Wednesday, Thursday and Friday.
- ★ **Group 3** students attend school on Thursday; remote learning takes place Monday, Tuesday, Wednesday and Friday.
- ★ **Group 4** students attend school on Friday; remote learning takes place Monday, Tuesday, Wednesday and Thursday.
- ★ **Group 5** students are those in special class settings (15:1:1) whose instructional program is best accomplished in a self-contained setting. These students attend school on Monday, Tuesday, Wednesday, Thursday and Friday.
- ★ **Group 6** students have chosen to learn remotely 100% of the time.

ELL students will be provided the required instructional Units of Study in their ENL program through both in-school and remote learning environments.



North Syracuse Central School District Reopening Guidance

OUR PATH FORWARD: A COMMUNITY OVERCOMING COVID

HIGH SCHOOL SCHEDULING

HIGH SCHOOL HYBRID INSTRUCTIONAL MODEL

| | MONDAY | TUESDAY | WEDNESDAY | THURSDAY | FRIDAY |
|---------|----------------------------|---------|-----------------|----------|--------|
| Group 1 | ★ | | | | |
| Group 2 | | ★ | | | |
| Group 3 | | | | ★ | |
| Group 4 | | | | | ★ |
| Group 5 | ★ | ★ | ★ | ★ | ★ |
| Group 6 | | | | | |
| | ★ Attends School In-Person | | Remote Learning | | |

The majority of NSCSD students will learn from home on Wednesdays so that buildings can be thoroughly cleaned and disinfected.

Student placement in Groups 1-5 will be announced in August. The District is making considerations to keep families on the same learning schedule.

STUDENT GROUPS

- ★ **Group 1** students attend school on Monday; remote learning takes place Tuesday, Wednesday, Thursday and Friday.
- ★ **Group 2** students attend school on Tuesday; remote learning takes place Monday, Wednesday, Thursday and Friday.
- ★ **Group 3** students attend school on Thursday; remote learning takes place Monday, Tuesday, Wednesday and Friday.
- ★ **Group 4** students attend school on Friday; remote learning takes place Monday, Tuesday, Wednesday and Thursday.
- ★ **Group 5** students are those in special class settings (12:1:4 and 15:1:1) whose instructional program is best accomplished in a self-contained setting. These students attend school on Monday, Tuesday, Wednesday, Thursday and Friday.
- ★ **Group 6** students have chosen to learn remotely 100% of the time.

ELL students will be provided the required instructional Units of Study in their ENL program through both in-school and remote learning environments.



North Syracuse Central School District Reopening Guidance

OUR PATH FORWARD: A COMMUNITY OVERCOMING COVID

SPECIAL AREAS & CTE

SPECIAL AREA INSTRUCTION

The North Syracuse Central School District strives to provide all students with a variety of learning opportunities in all areas. Special area instruction is a key component of education and learning in the District. As such, the NSCSD has made every effort to consider special areas in planning for all instructional models. The District will make every effort to provide instruction in these areas in a safe manner according to CDC and DOH guidelines. Special area instruction includes the following:

- Art Education
- Music Education (Including Band, Chorus and Orchestra)
- Library Media Services
- Health Education
- Business Education
- Family and Consumer Sciences
- Career and Technical Education
- Physical Education
- Technology Education

CAREER AND TECHNICAL EDUCATION

The North Syracuse Central School District will ensure that all applicable NYS Learning Standards for CTE instruction will be met and content that is critical for meeting these standards, as well requirements for applicable industry certifications or other post-secondary credentialing is identified.

The District will ensure that CTE coursework is taught by appropriately certified CTE teachers. Instructors who are required to hold a NYS professional license for a particular content area (i.e., health sciences, barbering, appearance enhancement) must maintain such license without lapse.

The District will ensure that all CTE laboratory/clinical instruction and supervision is delivered by appropriately certified CTE instructors.



North Syracuse Central School District Reopening Guidance

OUR PATH FORWARD: A COMMUNITY OVERCOMING COVID

ATHLETICS & EXTRACURRICULARS

ATHLETICS

On June 25, 2020 the New York State Governor's office informed the New York State Public High School Athletics Association (NYSPHSAA) and the member schools that they are able to allow individuals or groups access to their fields and grounds. However, schools are still prohibited from any indoor activities, any in-person instruction (excluding special education), and any organized sports or recreational activities that are hosted/operated. NSCSD athletics and Co-Curricular will remain closed until further guidance from NYS Governor's office and NYSPHSAA.

EXTRACURRICULARS

The District will develop policies regarding extracurricular programs including which activities will be allowed, considering social distancing, PPE usage, and cleaning and disinfection, as well as risk of COVID-19 transmission. For the beginning of the school year, field trips will not be permitted.

STUDENT TEACHING & LEARNING

The District will continue to welcome student teachers and work collaboratively with colleges and universities to provide placements within our schools. We will work with colleges and universities to find appropriate ways in which student teachers can support classroom instruction while providing critical knowledge and skills. Student teachers will be expected to actively participate in in-person instruction, a hybrid model, or remote learning.

CERTIFICATION

The North Syracuse Central School District is committed to providing highly qualified, certified professionals in all classrooms and special service areas for both in person and virtual learning environments.

Substitute Staff

Substitutes will continue to be an integral part of District operations throughout the reopening. Substitutes will be responsible for continuing instruction, support and services to students in place of the staff member for whom they substituting. PPE will be provided as needed to all substitutes the same as regular staff and will be subject to the same screening procedures as other employees or visitors. Substitute staff will be invited to attend training relative to reopening procedures that is being provided on Superintendent's conference days to all staff.



North Syracuse Central School District Reopening Guidance

OUR PATH FORWARD: A COMMUNITY OVERCOMING COVID

ACKNOWLEDGMENTS

THANK YOU TO OUR PARTNERS AND COMMITTEE MEMBERS AND COMMUNITY

This plan is comprised of the collaborative work of more than 100 District stakeholders coming together through the NSCSD Re-Entry Committee and its five subgroups: Instructional Operations, Proactive Infection, Social and Emotional Wellness, Workplace Safety and Communications.

Tremendous thanks to the following individuals: Elizabeth Abbott, Shawn Akley, David Babikian, Jody Barnes, Danielle Barrett, Timothy Bednarski, Mary Beebe, Nikki Bomasuto, Terri Bourgeios, Daniel Bowles, Melinda Bristol, Patricia Burns, Olivia Cambs, Ashley Carducci, Sue Carnifax, Tina Chmielewski, Kathleen Clark, Philip Cleary, Laurie Close, Linda Congdon, Matthew Conti, Laurie Cook, David Cordone, Melissa Dickens, Valerie DiFlorio, Jennifer Dorschel, Dr. Justin Fedor, Sean Dunlap, Matthew Erwin, Timothy Esposito, Joseph Farranto, Christine Fehrman, Monica Fitzgerald, Kelly Forsyth, Lisa Garofalo, Ericka Gilbert, Nicole Ginsburg, Kelly Glashauser, Carol Goehner, Lisa Goldberg, Ashleigh Green, Carol Guido, Kelly Hahn, Alison Hill, Kristen Hill, Todd Hilt, Heidi Hobbs, Joseph Howell, Dawn Hussein, Nicole Ince, Janna Keefe, Donald Keegan, Elizabeth Keeley, Sara Kees, Christine Kidd, Shannon Knapp, Mary Ann Knight, Janel Kondakoff, John Kuryla, William LaClair, Marcia Lamirande, Christopher Laurenzo, Heidi Lavere, Christopher Leahey, Danielle Licata, Robin Lisi, Carolyn Lonergan, Ann Lorenzini, Chrissie Lovecchio, David Lunden, Lyndsey Maloney, Joseph Manfredi, Christopher Manke, Anna Maria Marullo, Cheryl McDonald, Renee Merritt, Sally Meyers, Lisa Mezzo, Jill Millias, Matthew Motala, Mary Beth Muster, Marilyn Nandin, Jason Nephew, Kathryn Noel, Jenn Pacelli, Christopher Pallotta, Melissa Petrarc, Margaret Puma, Heather Rapp, John Rice, Margaret Rush, Linda Salmons, Timarie Schipani, David Shaw, Karin Sherry, Kathy Shuman, Rose Marie Stagnitta, Annette Stein, Gregory Stone, Jamie Sullivan, Wendy Swift, Sandra Thorne, Joanne Thornton, Danielle Todisco, Jill Trubia, Constance Turose, Melinda Vavonese, Sara Villnave, Barbara Walls, Andrew Wasiluk, Linda Weber, Kathleen Wheeler, Lauren Wisniewski and Charles Yonko

Many of the graphic elements in this document are used with permission courtesy of Flaticon.com. Authors include: mavadee, freepik and smashicons.

Thank you to these creators!